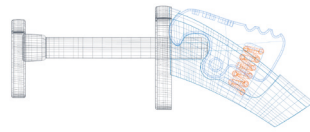


DIAMOND HOOP EARRINGS



Push-Button Mechanism
Extra secure and easy to use



0.60 Inches
(16mm)

SE63-AS 1.1mm	96 Dia.x.007=0.67 ct.	8.9	Gr. (1.1mm)
SE63-AS 1.3mm	90 Dia.x.01=0.90 ct.	9.2	Gr. (1.3mm)
SE63-AS 1.5mm	78 Dia.x.015=1.17 ct.	10.5	Gr. (1.5mm)



.90 Inches
(23.5mm)

SE63-BS 1.1mm	152 Dia.x.007=1.06 ct.	9.8	Gr. (1.1mm)
SE63-BS 1.3mm	134 Dia.x.01=1.34 ct.	9.8	Gr. (1.3mm)
SE63-BS 1.5mm	116 Dia.x.015=1.74 ct.	11.0	Gr. (1.5mm)



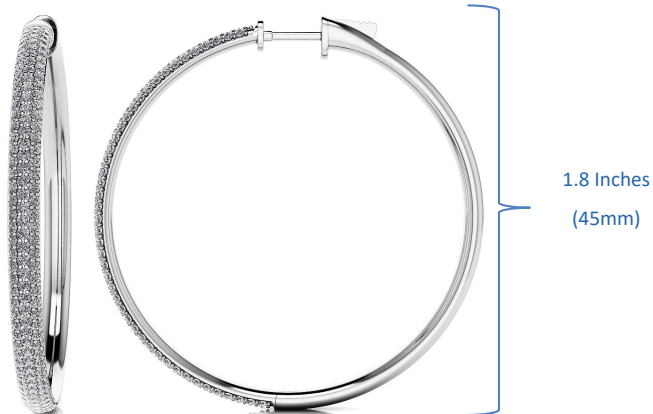
1.2 Inches
(30.5mm)

SE63-CS 1.1mm	200 Dia.x.007=1.40 ct.	15.0	Gr. (1.1mm)
SE63-CS 1.3mm	168 Dia.x.01=1.68 ct.	16.0	Gr. (1.3mm)
SE63-CS 1.5mm	152 Dia.x.015=2.28 ct.	18.0	Gr. (1.5mm)



1.5 Inches
(37.8mm)

SE63-DS 1.1mm	254 Dia.x.007=1.78 ct.	20.0	Gr. (1.1mm)
SE63-DS 1.3mm	224 Dia.x.01=2.24 ct.	21.0	Gr. (1.3mm)
SE63-DS 1.5mm	188 Dia.x.015=2.82 ct.	22.8	Gr. (1.5mm)



1.8 Inches
(45mm)

SE63-ES 1.1mm	312 Dia.x.007=2.18 ct.	22.0	Gr. (1.1mm)
SE63-ES 1.3mm	270 Dia.x.01=2.70 ct.	24.0	Gr. (1.3mm)
SE63-ES 1.5mm	218 Dia.x.015=3.27 ct.	26.0	Gr. (1.5mm)